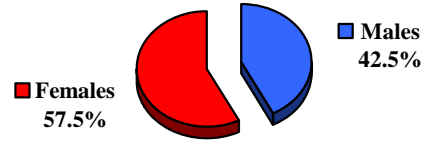


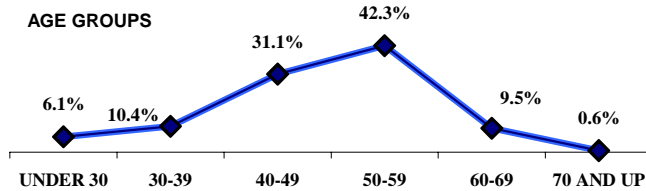
**Service Center
As of September 27, 2008**

TOTAL	473	
GRADES		
SES	7	
EJ/EK	7	
EN V	3	
EN IV	15	
EN III	4	
NN (Engineering)	49	
NQ (Prof/Tech/Admin)	341	
NU (Tech/Admin Support)	47	
RETIREMENT		
ELIGIBLE TO RETIRE IMMEDIATELY	76	16.1%
ELIGIBLE TO RETIRE BY 9/27/2012	154	32.6%
GENDER		
Males	201	42.5%
Females	272	57.5%
AGE		
AVERAGE AGE	49.2 YRS	
UNDER 30	29	6.1%
30-39	49	10.4%
40-49	147	31.1%
50-59	200	42.3%
60-69	45	9.5%
70 AND UP	3	0.6%
YEARS OF FEDERAL SERVICE		
AVERAGE LENGTH	19.4 YRS	
LESS THAN 10 YEARS	112	23.7%
10-19 YEARS	109	23.0%
20-29 YEARS	172	36.4%
30-39 YEARS	80	16.9%
40-49 YEARS	0	0.0%
EDUCATION		
Ph.D/Sc.D Degree	11	2.3%
Masters Degrees	115	24.3%
Bachelor Degrees	167	35.3%
Without Degrees	180	38.1%
SUPERVISOR RATIO		
SUPERVISORS	67	
SUPERVISORS RATIO	6.1 TO 1	
DIVERSITY		
American Indian Male	5	1.1%
American Indian Female	19	4.0%
African American Male	9	1.9%
African American Female	26	5.5%
Asian Male	7	1.5%
Asian Female	6	1.3%
Hispanic Male	63	13.3%
Hispanic Female	115	24.3%
White Male	117	24.7%
White Female	106	22.4%
SPECIAL		
DISABILITY	47	9.9%
VETERANS	88	18.6%

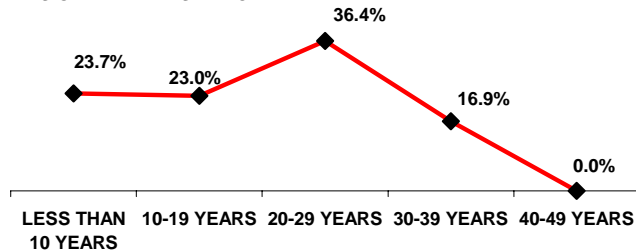
GENDER



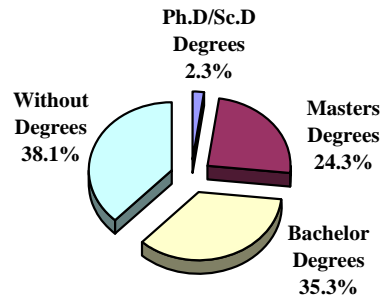
AGE GROUPS



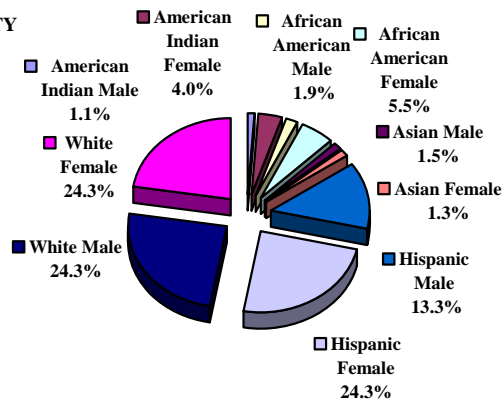
YEARS OF FEDERAL SERVICE



EDUCATION



DIVERSITY



SERVICE CENTER																											
	TOTAL	Subtotal				American Indian				Asian				African American				Hispanic				White					
		Male	Female			Male	Female			Male	Female			Male	Female			Male	Female			Male	Female				
TOTAL		473	201	42.5%	272	57.5%	5	1.1%	19	4.0%	7	1.5%	6	1.3%	9	1.9%	26	5.5%	63	13.3%	115	24.3%	117	24.7%	106	22.4%	
ELIGIBLE TO RETIRE IMMEDIATELY	76	16.1%	44	9.3%	32	6.8%	2	0.4%	2	0.4%	2	0.4%	0	0.0%	3	0.6%	6	1.3%	13	2.7%	9	1.9%	24	5.1%	15	3.2%	
ELIGIBLE TO RETIRE BY 9/27/2008	154	32.6%	74	15.6%	80	16.9%	2	0.4%	3	0.6%	3	0.6%	0	0.0%	4	0.8%	12	2.5%	21	4.4%	27	5.7%	44	9.3%	38	8.0%	
AVERAGE AGE	49.2 YRS																										
AGE UNDER 30	29	6.1%	6	1.3%	23	4.9%	1	0.2%	4	0.8%	0	0.0%	1	0.2%	0	0.0%	1	0.2%	4	0.8%	14	3.0%	1	0.2%	3	0.6%	
AGE 30-39	49	10.4%	16	3.4%	33	7.0%	1	0.2%	3	0.6%	0	0.0%	3	0.6%	2	0.4%	2	0.4%	6	1.3%	18	3.8%	7	1.5%	7	1.5%	
AGE 40-49	147	31.1%	70	14.8%	77	16.3%	1	0.2%	6	1.3%	3	0.6%	2	0.4%	2	0.4%	6	1.3%	25	5.3%	36	7.6%	39	8.2%	27	5.7%	
AGE 50-59	200	42.3%	80	16.9%	120	25.4%	1	0.2%	4	0.8%	2	0.4%	0	0.0%	3	0.6%	14	3.0%	20	4.2%	41	8.7%	54	11.4%	61	12.9%	
AGE 60-69	45	9.5%	18	3.8%	27	5.7%	2	0.4%	1	0.2%	0	0.0%	2	0.4%	3	0.6%	2	0.4%	6	1.3%	7	1.5%	7	1.5%	15	3.2%	
AGE 70 AND UP	3	0.6%	2	0.4%	1	0.2%	0	0.0%	0	0.0%	0	0.0%	0	0.0%	0	0.0%	0	0.0%	1	0.2%	0	0.0%	1	0.2%	1	0.2%	
FEDERAL SERVICE																											
AVERAGE LENGTH	19.4 YRS																										
LESS THAN 10 YEARS	112	23.7%	51	10.8%	61	12.9%	2	0.4%	8	1.7%	2	0.4%	2	0.4%	1	0.2%	4	0.8%	21	4.4%	25	5.3%	25	5.3%	22	4.7%	
10-19 YEARS	109	23.0%	46	9.7%	63	13.3%	1	0.2%	4	0.8%	2	0.4%	3	0.6%	2	0.4%	3	0.6%	8	1.7%	25	5.3%	33	7.0%	28	5.9%	
20-29 YEARS	172	36.4%	70	14.8%	102	21.6%	0	0.0%	6	1.3%	3	0.6%	1	0.2%	4	0.8%	12	2.5%	23	4.9%	43	9.1%	40	8.5%	40	8.5%	
30-39 YEARS	80	16.9%	34	7.2%	46	9.7%	2	0.4%	1	0.2%	0	0.0%	0	0.0%	2	0.4%	7	1.5%	11	2.3%	22	4.7%	19	4.0%	16	3.4%	
40-49 YEARS	0	0.0%	0		0		0		0		0		0		0		0		0		0		0		0		
EDUCATION																											
Ph.D/Sc.D DEGREES	11	2.3%	7	1.5%	4	0.8%	0	0.0%	0	0.0%	0	0.0%	0	0.0%	0	0.0%	0	0.0%	2	0.4%	3	0.6%	5	1.1%	1	0.2%	
MASTERS DEGREES	115	24.3%	70	14.8%	45	9.5%	1	0.2%	3	0.6%	4	0.8%	3	0.6%	2	0.4%	2	0.4%	16	3.4%	14	3.0%	47	9.9%	23	4.9%	
BACHELORS DEGREES	167	35.3%	87	18.4%	80	16.9%	3	0.6%	4	0.8%	3	0.6%	1	0.2%	2	0.4%	10	2.1%	33	7.0%	28	5.9%	46	9.7%	37	7.8%	
NO DEGREE	180	38.1%	37	7.8%	143	30.2%	1	0.2%	12	2.5%	0	0.0%	2	0.4%	5	1.1%	14	3.0%	12	2.5%	70	14.8%	19	4.0%	45	9.5%	
SUPERVISORS																											
SUPERVISORS	67		29	6.1%	38	8.0%	0	0.0%	2	0.4%	1	0.2%	0	0.0%	2	0.4%	4	0.8%	14	3.0%	14	3.0%	12	2.5%	18	3.8%	
SUPERVISORS RATIO	6.1	TO 1																									
SPECIAL																											
DISABILITY	47	9.9%	21	4.4%	26	5.5%	1	0.2%	1	0.2%	1	0.2%	0	0.0%	2	0.4%	3	0.6%	5	1.1%	11	2.3%	12	2.5%	11	2.3%	
VETERANS PREFERENCE	88	18.6%	76	16.1%	12	2.5%	2	0.4%	2	0.4%	2	0.4%	0	0.0%	5	1.1%	3	0.6%	20	4.2%	2	0.4%	47	9.9%	5	1.1%	