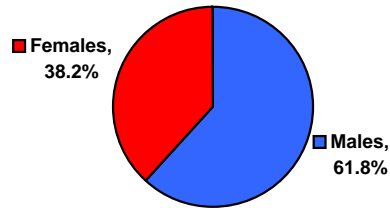


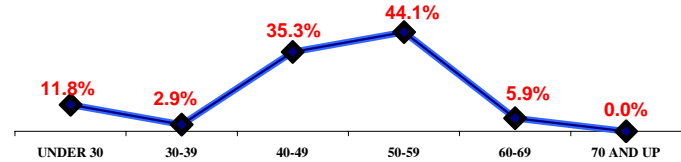
SAVANNAH RIVER SITE OFFICE
As of March 15, 2008

TOTAL	34	
GRADES		
SES	1	
EK	3	
EN V	1	
EN IV	6	
EN III	2	
EN 00	0	
GM/GS-15	3	
GM/GS-14	7	
GM/GS-13	7	
GS-12	2	
GS-11-05	2	
GS-04-01	0	
RETIREMENT		
ELIGIBLE TO RETIRE IMMEDIATELY	6	17.6%
ELIGIBLE TO RETIRE BY 03/15/2011	9	26.5%
GENDER		
Males	21	61.8%
Females	13	38.2%
AGE		
AVERAGE AGE	47.9 YRS	
UNDER 30	4	11.8%
30-39	1	2.9%
40-49	12	35.3%
50-59	15	44.1%
60-69	2	5.9%
70 AND UP	0	0.0%
YEARS OF FEDERAL SERVICE		
AVERAGE LENGTH	18.8 YRS	
LESS THAN 10 YEARS	6	17.6%
10-19 YEARS	11	32.4%
20-29 YEARS	12	35.3%
30-39 YEARS	5	14.7%
40-49 YEARS	0	0.0%
EDUCATION		
Ph.D/Sc.D Degree	0	0.0%
Masters Degrees	10	29.4%
Bachelor Degrees	20	58.8%
No Degrees	4	11.8%
SUPERVISOR RATIO		
SUPERVISORS	5	
SUPERVISORS RATIO	5.8 TO 1	
DIVERSITY		
American Indian Male	0	0.0%
American Indian Female	1	2.9%
African American Male	3	8.8%
African American Female	2	5.9%
Asian Male	1	2.9%
Asian Female	1	2.9%
Hispanic Male	0	0.0%
Hispanic Female	0	0.0%
White Female	9	26.5%
White Male	17	50.0%
SPECIAL		
DISABILITY	1	2.9%
VETERANS	8	23.5%

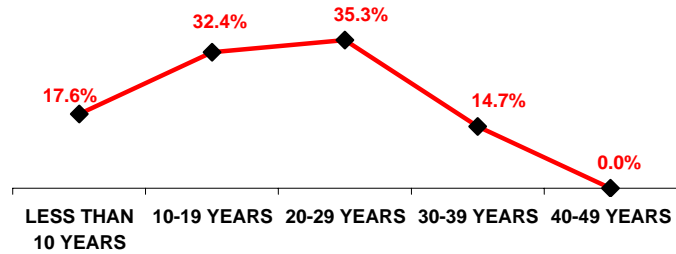
GENDER



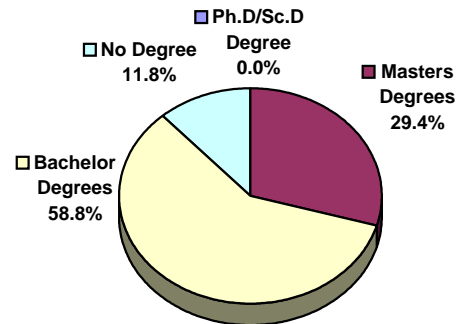
AGE GROUPS



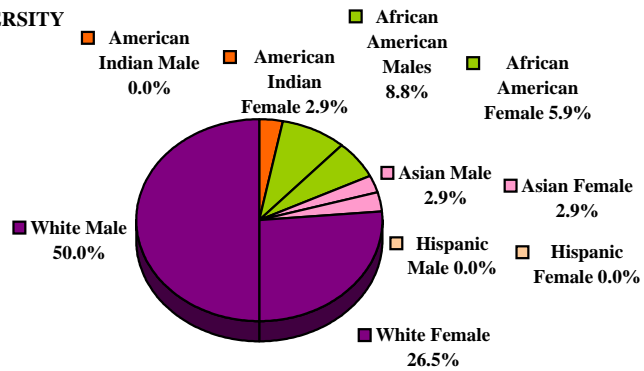
YEARS OF FEDERAL SERVICE



EDUCATION



DIVERSITY



SAVANNAH RIVER SITE OFFICE

		Subtotal				American Indian				Asian				African American				Hispanic				White				
		Male		Female		Male		Female		Male		Female		Male		Female		Male		Female		Male		Female		
TOTAL	34	21	61.8%	13	38.2%	0	0.0%	1	2.9%	1	2.9%	1	2.9%	3	8.8%	2	5.9%	0	0.0%	0	0.0%	17	50.0%	9	26.5%	
RETIREMENT																										
ELIGIBLE TO RETIRE IMMEDIATELY	6	17.6%	4	11.8%	2	5.9%	0	0.0%	0	0.0%	0	0.0%	0	0.0%	0	0.0%	0	0.0%	0	0.0%	0	0.0%	4	11.8%	2	5.9%
ELIGIBLE TO RETIRE BY 03/15/2012	9	26.5%	6	17.6%	3	8.8%	0	0.0%	0	0.0%	0	0.0%	0	0.0%	1	2.9%	0	0.0%	0	0.0%	0	0.0%	6	17.6%	2	5.9%
AGE																										
AVERAGE AGE	47.9 YRS																									
AGE UNDER 30	4	11.8%	3	8.8%	1	2.9%	0	0.0%	0	0.0%	1	2.9%	1	2.9%	2	5.9%	0	0.0%	0	0.0%	0	0.0%	0	0.0%	0	0.0%
AGE 30-39	1	2.9%	1	2.9%	0	0.0%	0	0.0%	0	0.0%	0	0.0%	0	0.0%	1	2.9%	0	0.0%	0	0.0%	0	0.0%	0	0.0%	0	0.0%
AGE 40-49	12	35.3%	8	23.5%	4	11.8%	0	0.0%	0	0.0%	0	0.0%	0	0.0%	1	2.9%	0	0.0%	0	0.0%	0	0.0%	8	23.5%	3	8.8%
AGE 50-59	15	44.1%	8	23.5%	7	20.6%	0	0.0%	1	2.9%	0	0.0%	0	0.0%	1	2.9%	0	0.0%	0	0.0%	0	0.0%	8	23.5%	5	14.7%
AGE 60-69	2	5.9%	1	2.9%	1	2.9%	0	0.0%	0	0.0%	0	0.0%	0	0.0%	0	0.0%	0	0.0%	0	0.0%	0	0.0%	1	2.9%	1	2.9%
AGE 70 AND UP	0	0.0%	0	0.0%	0	0.0%	0	0.0%	0	0.0%	0	0.0%	0	0.0%	0	0.0%	0	0.0%	0	0.0%	0	0.0%	0	0.0%	0	0.0%
FEDERAL SERVICE																										
AVERAGE LENGTH	18.8 YRS																									
LESS THAN 10 YEARS	6	17.6%	4	11.8%	2	5.9%	0	0.0%	0	0.0%	1	2.9%	1	2.9%	2	5.9%	0	0.0%	0	0.0%	0	0.0%	1	2.9%	1	2.9%
10-19 YEARS	11	32.4%	6	17.6%	5	14.7%	0	0.0%	1	2.9%	0	0.0%	0	0.0%	1	2.9%	1	2.9%	0	0.0%	0	0.0%	5	14.7%	3	8.8%
20-29 YEARS	12	35.3%	7	20.6%	5	14.7%	0	0.0%	0	0.0%	0	0.0%	0	0.0%	1	2.9%	0	0.0%	0	0.0%	0	0.0%	7	20.6%	4	11.8%
30-39 YEARS	5	14.7%	4	11.8%	1	2.9%	0	0.0%	0	0.0%	0	0.0%	0	0.0%	0	0.0%	0	0.0%	0	0.0%	0	0.0%	4	11.8%	1	2.9%
40-49 YEARS	0	0.0%	0	0.0%	0	0.0%	0	0.0%	0	0.0%	0	0.0%	0	0.0%	0	0.0%	0	0.0%	0	0.0%	0	0.0%	0	0.0%	0	0.0%
EDUCATION																										
Ph.D/Sc.D DEGREES	0	0.0%	0	0.0%	0	0.0%	0	0.0%	0	0.0%	0	0.0%	0	0.0%	0	0.0%	0	0.0%	0	0.0%	0	0.0%	0	0.0%	0	0.0%
MASTERS DEGREES	10	29.4%	6	17.6%	4	11.8%	0	0.0%	1	2.9%	1	2.9%	0	0.0%	1	2.9%	1	2.9%	0	0.0%	0	0.0%	4	11.8%	2	5.9%
BACHELORS DEGREES	20	58.8%	15	44.1%	5	14.7%	0	0.0%	0	0.0%	0	0.0%	1	2.9%	2	5.9%	0	0.0%	0	0.0%	0	0.0%	13	38.2%	4	11.8%
NO DEGREE	4	11.8%	0	0.0%	4	11.8%	0	0.0%	0	0.0%	0	0.0%	0	0.0%	1	2.9%	0	0.0%	0	0.0%	0	0.0%	0	0.0%	3	8.8%
SUPERVISORS																										
SUPERVISORS	5		4	11.8%	1	2.9%	0	0.0%	0	0.0%	0	0.0%	0	0.0%	0	0.0%	0	0.0%	0	0.0%	0	0.0%	4	11.8%	1	2.9%
SUPERVISORS RATIO	5.8	TO 1																								
SPECIAL																										
DISABILITY	1	2.9%	1	2.9%	0	0.0%	0	0.0%	0	0.0%	0	0.0%	0	0.0%	0	0.0%	0	0.0%	0	0.0%	0	0.0%	1	2.9%	0	0.0%
VETERANS PREFERENCE	8	23.5%	4	11.8%	4	11.8%	0	0.0%	0	0.0%	0	0.0%	0	0.0%	0	0.0%	0	0.0%	0	0.0%	0	0.0%	4	11.8%	4	11.8%