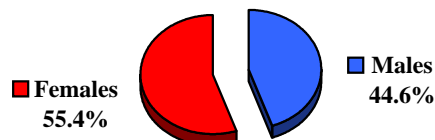


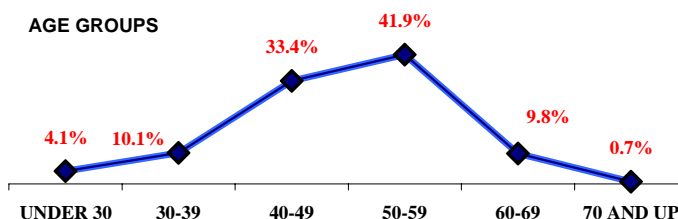
## Service Center As of April 12, 2008

TOTAL	437	
<b>PAY PLAN</b>		
SES	8	
EJ/EK	7	
EN V	3	
EN IV	11	
EN III	4	
NN	49	
NQ	311	
NU	44	
<b>RETIREMENT</b>		
ELIGIBLE TO RETIRE IMMEDIATELY	67	15.3%
ELIGIBLE TO RETIRE BY 4/12/2012	147	33.6%
<b>GENDER</b>		
Males	195	44.6%
Females	242	55.4%
<b>AGE</b>		
AVERAGE AGE	47 YRS	
UNDER 30	18	4.1%
30-39	44	10.1%
40-49	146	33.4%
50-59	183	41.9%
60-69	43	9.8%
70 AND UP	3	0.7%
<b>YEARS OF FEDERAL SERVICE</b>		
AVERAGE LENGTH	17.8 YRS	
LESS THAN 10 YEARS	88	20.1%
10-19 YEARS	103	23.6%
20-29 YEARS	173	39.6%
30-39 YEARS	73	16.7%
40-49 YEARS	0	0.0%
<b>EDUCATION</b>		
Ph.D/Sc.D Degree	10	2.3%
Masters Degrees	108	24.7%
Bachelor Degrees	164	37.5%
Without Degrees	155	35.5%
<b>SUPERVISOR RATIO</b>		
SUPERVISORS	70	
SUPERVISORS RATIO	5.2 TO 1	
<b>DIVERSITY</b>		
American Indian Male	5	1.1%
American Indian Female	14	3.2%
African American Male	7	1.6%
African American Female	28	6.4%
Asian Male	9	2.1%
Asian Female	4	0.9%
Hispanic Male	59	13.5%
Hispanic Female	103	23.6%
White Male	115	26.3%
White Female	93	21.3%
<b>SPECIAL</b>		
DISABILITY	42	9.6%
VETERANS	84	19.2%

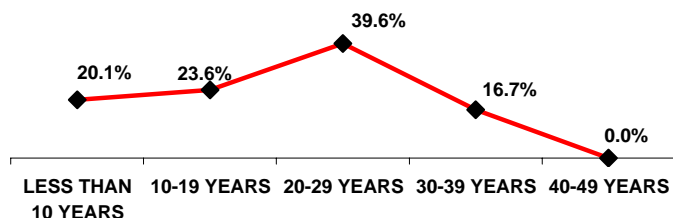
### GENDER



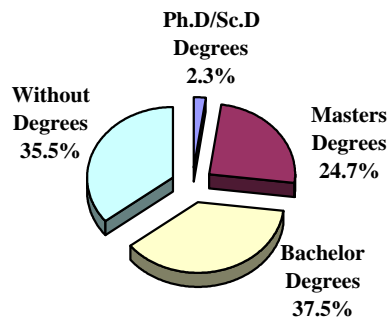
### AGE GROUPS



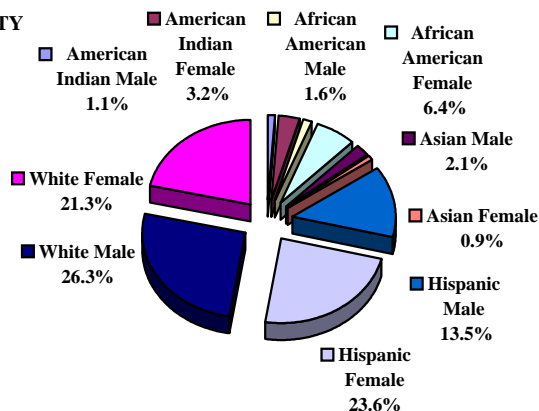
### YEARS OF FEDERAL SERVICE



### EDUCATION



### DIVERSITY



SERVICE CENTER																										
		Subtotal				American Indian				Asian				African American				Hispanic				White				
		Male		Female		Male		Female		Male		Female		Male		Female		Male		Female		Male		Female		
TOTAL	437	195	44.6%	242	55.4%	5	1.1%	14	3.2%	9	2.1%	4	0.9%	7	1.6%	28	6.4%	59	13.5%	103	23.6%	115	26.3%	93	21.3%	
RETIREMENT																										
ELIGIBLE TO RETIRE IMMEDIATELY	67	15.3%	44	10.1%	23	5.3%	2	0.5%	1	0.2%	2	0.5%	0	0.0%	2	0.5%	5	1.1%	12	2.7%	5	1.1%	26	5.9%	12	2.7%
ELIGIBLE TO RETIRE BY 04/12/2012	147	33.6%	76	17.4%	71	16.2%	2	0.5%	3	0.7%	4	0.9%	0	0.0%	4	0.9%	10	2.3%	20	4.6%	25	5.7%	46	10.5%	33	7.6%
AGE																										
AVERAGE AGE	47 YRS																									
AGE UNDER 30	18	4.1%	6	1.4%	12	2.7%	1	0.2%	1	0.2%	0	0.0%	0	0.0%	0	0.0%	1	0.2%	5	1.1%	9	2.1%	0	0.0%	1	0.2%
AGE 30-39	44	10.1%	15	3.4%	29	6.6%	1	0.2%	3	0.7%	0	0.0%	3	0.7%	1	0.2%	3	0.7%	6	1.4%	15	3.4%	7	1.6%	5	1.1%
AGE 40-49	146	33.4%	67	15.3%	79	18.1%	1	0.2%	4	0.9%	4	0.9%	1	0.2%	2	0.5%	8	1.8%	22	5.0%	39	8.9%	38	8.7%	27	6.2%
AGE 50-59	183	41.9%	76	17.4%	107	24.5%	1	0.2%	5	1.1%	3	0.7%	0	0.0%	2	0.5%	13	3.0%	19	4.3%	35	8.0%	51	11.7%	54	12.4%
AGE 60-69	43	9.8%	29	6.6%	14	3.2%	1	0.2%	1	0.2%	2	0.5%	0	0.0%	2	0.5%	3	0.7%	6	1.4%	5	1.1%	18	4.1%	5	1.1%
AGE 70 AND UP	3	0.7%	2	0.5%	1	0.2%	0	0.0%	0	0.0%	0	0.0%	0	0.0%	0	0.0%	0	0.0%	1	0.2%	0	0.0%	1	0.2%	1	0.2%
FEDERAL SERVICE																										
AVERAGE LENGTH	17.8 YRS																									
LESS THAN 10 YEARS	88	20.1%	48	11.0%	40	9.2%	2	0.5%	4	0.9%	3	0.7%	1	0.2%	1	0.2%	4	0.9%	19	4.3%	17	3.9%	23	5.3%	14	3.2%
10-19 YEARS	103	23.6%	46	10.5%	57	13.0%	1	0.2%	3	0.7%	3	0.7%	3	0.7%	2	0.5%	4	0.9%	10	2.3%	23	5.3%	30	6.9%	24	5.5%
20-29 YEARS	173	39.6%	67	15.3%	106	24.3%	0	0.0%	6	1.4%	3	0.7%	0	0.0%	2	0.5%	14	3.2%	19	4.3%	46	10.5%	43	9.8%	40	9.2%
30-39 YEARS	73	16.7%	34	7.8%	39	8.9%	2	0.5%	1	0.2%	0	0.0%	0	0.0%	2	0.5%	6	1.4%	11	2.5%	17	3.9%	19	4.3%	15	3.4%
40-49 YEARS	0	0.0%	0	0.0%	0	0.0%	0	0.0%	0	0.0%	0	0.0%	0	0.0%	0	0.0%	0	0.0%	0	0.0%	0	0.0%	0	0.0%	0	0.0%
EDUCATION																										
Ph.D/Sc.D DEGREES	10	2.3%	8	1.8%	2	0.5%	0	0.0%	0	0.0%	0	0.0%	0	0.0%	0	0.0%	0	0.0%	3	0.7%	2	0.5%	5	1.1%	0	0.0%
MASTERS DEGREES	108	24.7%	67	15.3%	41	9.4%	1	0.2%	2	0.5%	4	0.9%	2	0.5%	2	0.5%	3	0.7%	15	3.4%	14	3.2%	45	10.3%	20	4.6%
BACHELORS DEGREES	164	37.5%	89	20.4%	75	17.2%	3	0.7%	5	1.1%	5	1.1%	1	0.2%	2	0.5%	10	2.3%	30	6.9%	26	5.9%	49	11.2%	33	7.6%
NO DEGREE	155	35.5%	31	7.1%	124	28.4%	1	0.2%	7	1.6%	0	0.0%	1	0.2%	3	0.7%	15	3.4%	11	2.5%	61	14.0%	16	3.7%	40	9.2%
SUPERVISORS																										
SUPERVISORS	70		32	7.3%	38	8.7%	0	0.0%	2	0.5%	1	0.2%	0	0.0%	2	0.5%	5	1.1%	13	3.0%	14	3.2%	16	3.7%	17	3.9%
SUPERVISORS RATIO	5.2	TO 1																								
SPECIAL																										
DISABILITY	42	9.6%	19	4.3%	23	5.3%	1	0.2%	1	0.2%	1	0.2%	0	0.0%	2	0.5%	3	0.7%	4	0.9%	10	2.3%	11	2.5%	9	2.1%
VETERANS PREFERENCE	84	19.2%	75	17.2%	9	2.1%	2	0.5%	2	0.5%	3	0.7%	0	0.0%	5	1.1%	3	0.7%	20	4.6%	1	0.2%	45	10.3%	3	0.7%