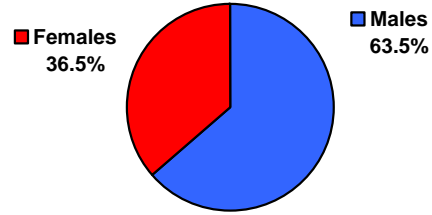


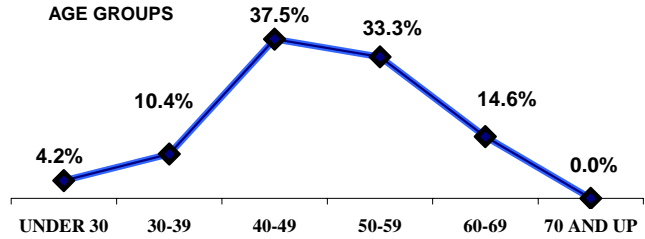
NEVADA SITE OFFICE
As of September 27, 2008

TOTAL	96	
PAY PLAN		
SES	1	
EJ/EK	8	
EN V	1	
EN IV	35	
NN	19	
NQ	29	
NU	3	
RETIREMENT		
ELIGIBLE TO RETIRE IMMEDIATELY	14	14.6%
ELIGIBLE TO RETIRE BY 09/27/2012	29	30.2%
GENDER		
Males	61	63.5%
Females	35	36.5%
AGE		
AVERAGE AGE	49.0 YRS	
UNDER 30	4	4.2%
30-39	10	10.4%
40-49	36	37.5%
50-59	32	33.3%
60-69	14	14.6%
70 AND UP	0	0.0%
YEARS OF FEDERAL SERVICE		
AVERAGE LENGTH	17.4 YRS	
LESS THAN 10 YEARS	23	24.0%
10-19 YEARS	36	37.5%
20-29 YEARS	28	29.2%
30-39 YEARS	7	7.3%
40-49 YEARS	2	2.1%
EDUCATION		
Ph.D/Sc.D Degree	2	2.1%
Masters Degrees	24	25.0%
Bachelor Degrees	53	55.2%
No Degrees	17	17.7%
SUPERVISOR RATIO		
SUPERVISORS	10	
SUPERVISORS RATIO	8.6 TO 1	
DIVERSITY		
American Indian Male	1	1.0%
American Indian Female	1	1.0%
African American Male	1	1.0%
African American Female	6	6.3%
Asian Male	2	2.1%
Asian Female	3	3.1%
Hispanic Male	6	6.3%
Hispanic Female	6	6.3%
White Female	19	19.8%
White Male	51	53.1%
SPECIAL		
DISABILITY	6	6.3%
VETERANS	24	25.0%

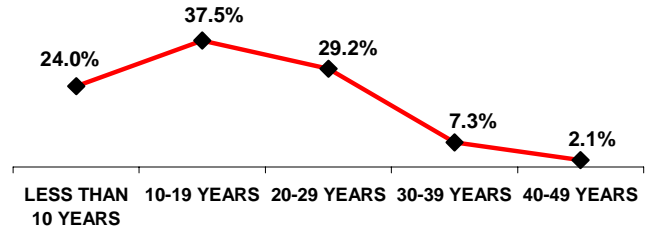
GENDER



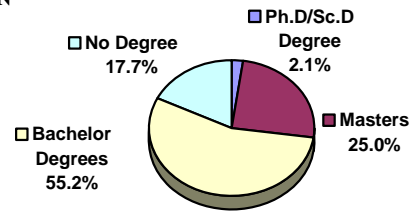
AGE GROUPS



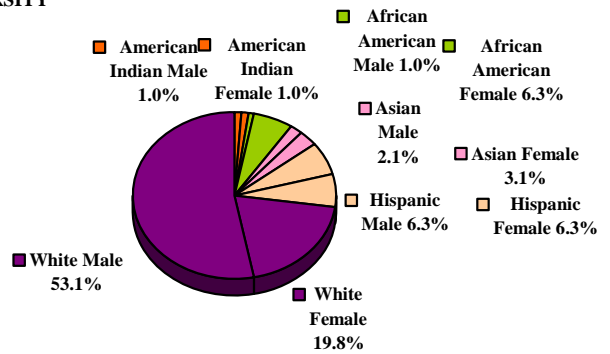
YEARS OF FEDERAL SERVICE



EDUCATION



DIVERSITY



NEVADA SITE OFFICE																										
		Subtotal				American Indian				Asian				African American				Hispanic				White				
		Male		Female		Male		Female		Male		Female		Male		Female		Male		Female		Male	Female			
TOTAL	96	61	63.5%	35	36.5%	1	1.0%	1	1.0%	2	2.1%	3	3.1%	1	1.0%	6	6.3%	6	6.3%	6	6.3%	51	53.1%	19	19.8%	
ELIGIBLE TO RETIRE IMMEDIATELY	14 14.6%	12	12.5%	2	2.1%	0	0.0%	0	0.0%	0	0.0%	0	0.0%	0	0.0%	1	1.0%	0	0.0%	0	0.0%	12	12.5%	1	1.0%	
ELIGIBLE TO RETIRE BY 09/27/2012	29 30.2%	22	22.9%	7	7.3%	0	0.0%	0	0.0%	2	2.1%	0	0.0%	0	0.0%	0	0.0%	4	4.2%	4	4.2%	16	16.7%	3	3.1%	
AGE																										
AVERAGE AGE	49.0 YRS																									
AGE UNDER 30	4	4.2%	2	2.1%	2	2.1%	0	0.0%	0	0.0%	1	1.0%	1	1.0%	0	0.0%	0	0.0%	0	0.0%	0	0.0%	1	1.0%	1	1.0%
AGE 30-39	10	10.4%	9	9.4%	1	1.0%	0	0.0%	0	0.0%	0	0.0%	0	0.0%	0	0.0%	0	0.0%	2	2.1%	1	1.0%	7	7.3%	0	0.0%
AGE 40-49	36	37.5%	19	19.8%	17	17.7%	1	1.0%	0	0.0%	1	1.0%	2	2.1%	1	1.0%	2	2.1%	4	4.2%	3	3.1%	12	12.5%	10	10.4%
AGE 50-59	32	33.3%	19	19.8%	13	13.5%	0	0.0%	1	1.0%	0	0.0%	0	0.0%	0	0.0%	3	3.1%	0	0.0%	2	2.1%	19	19.8%	7	7.3%
AGE 60-69	14	14.6%	12	12.5%	2	2.1%	0	0.0%	0	0.0%	0	0.0%	0	0.0%	0	0.0%	1	1.0%	0	0.0%	0	0.0%	12	12.5%	1	1.0%
AGE 70 AND UP	0	0.0%	0	0.0%	0	0.0%	0	0.0%	0	0.0%	0	0.0%	0	0.0%	0	0.0%	0	0.0%	0	0.0%	0	0.0%	0	0.0%	0	0.0%
FEDERAL SERVICE																										
AVERAGE LENGTH	17.4 YRS																									
LESS THAN 10 YEARS	23	24.0%	13	13.5%	10	10.4%	0	0.0%	0	0.0%	1	1.0%	2	2.1%	0	0.0%	1	1.0%	0	0.0%	2	2.1%	12	12.5%	5	5.2%
10-19 YEARS	36	37.5%	24	25.0%	12	12.5%	1	1.0%	1	1.0%	1	1.0%	1	1.0%	0	0.0%	3	3.1%	5	5.2%	1	1.0%	17	17.7%	6	6.3%
20-29 YEARS	28	29.2%	18	18.8%	10	10.4%	0	0.0%	0	0.0%	0	0.0%	0	0.0%	1	1.0%	2	2.1%	1	1.0%	1	1.0%	16	16.7%	7	7.3%
30-39 YEARS	7	7.3%	4	4.2%	3	3.1%	0	0.0%	0	0.0%	0	0.0%	0	0.0%	0	0.0%	0	0.0%	0	0.0%	2	2.1%	4	4.2%	1	1.0%
40-49 YEARS	2	2.1%	2	2.1%	0	0.0%	0	0.0%	0	0.0%	0	0.0%	0	0.0%	0	0.0%	0	0.0%	0	0.0%	0	0.0%	2	2.1%	0	0.0%
EDUCATION																										
Ph.D/Sc.D DEGREES	2	2.1%	2	2.1%	0	0.0%	0	0.0%	0	0.0%	0	0.0%	0	0.0%	0	0.0%	0	0.0%	0	0.0%	0	0.0%	2	2.1%	0	0.0%
MASTERS DEGREES	24	25.0%	17	17.7%	7	7.3%	1	1.0%	0	0.0%	1	1.0%	1	1.0%	0	0.0%	1	1.0%	2	2.1%	2	2.1%	13	13.5%	3	3.1%
BACHELORS DEGREES	53	55.2%	35	36.5%	18	18.8%	0	0.0%	0	0.0%	1	1.0%	2	2.1%	1	1.0%	2	2.1%	4	4.2%	3	3.1%	29	30.2%	11	11.5%
NO DEGREE	17	17.7%	7	7.3%	10	10.4%	0	0.0%	1	1.0%	0	0.0%	0	0.0%	0	0.0%	3	3.1%	0	0.0%	1	1.0%	7	7.3%	5	5.2%
SUPERVISORS																										
SUPERVISORS	10		5	5.2%	5	5.2%	0	0.0%	0	0.0%	0	0.0%	1	1.0%	0	0.0%	0	0.0%	1	1.0%	1	1.0%	4	4.2%	3	3.1%
SUPERVISORS RATIO	8.6	TO 1																								
SPECIAL																										
DISABILITY	6	6.3%	3	3.1%	3	3.1%	0	0.0%	0	0.0%	0	0.0%	0	0.0%	0	0.0%	1	1.0%	0	0.0%	0	0.0%	3	3.1%	2	2.1%
VETERANS PREFERENCE	24	25.0%	21	21.9%	3	3.1%	0	0.0%	0	0.0%	0	0.0%	1	1.0%	0	0.0%	1	1.0%	0	0.0%	1	1.0%	21	21.9%	0	0.0%